

PLAT NO. 44 MARTIN DOWNS P.U.D.

BEING A REPLAT OF PORTIONS OF BLOCKS 5, 6, 7, 8, 10
AND ABUTTING ROADWAYS AS SHOWN ON "THE PLAT OF THE
CLEVELAND 2ND ADDITION TO THE TOWN OF PALM CITY,
FLORIDA", AS RECORDED IN PLAT BOOK 11, PAGE 63 OF THE
PUBLIC RECORDS OF PALM BEACH (NOW MARTIN) COUNTY,
FLORIDA, LYING IN SECTION 18, TOWNSHIP 38 SOUTH,
RANGE 41 EAST, MARTIN COUNTY, FLORIDA.

AUGUST, 1988

REC'D
MARSHA STILLER
CLERK OF CIRCUIT COURT
BY D.C.

I, MARSHA STILLER, CLERK
OF THE CIRCUIT COURT OF
MARTIN COUNTY, FLORIDA,
HEREBY CERTIFY THAT THIS
PLAT WAS FILED FOR RECORD
IN PLAT BOOK 11,
PAGE 69, MARTIN COUNTY,
FLORIDA, PUBLIC RECORDS,
THIS _____ DAY OF
_____, 1988.

MARSHA STILLER,
CLERK CIRCUIT COURT
MARTIN COUNTY, FLORIDA.

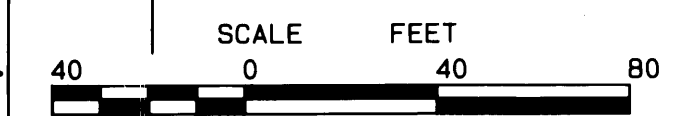
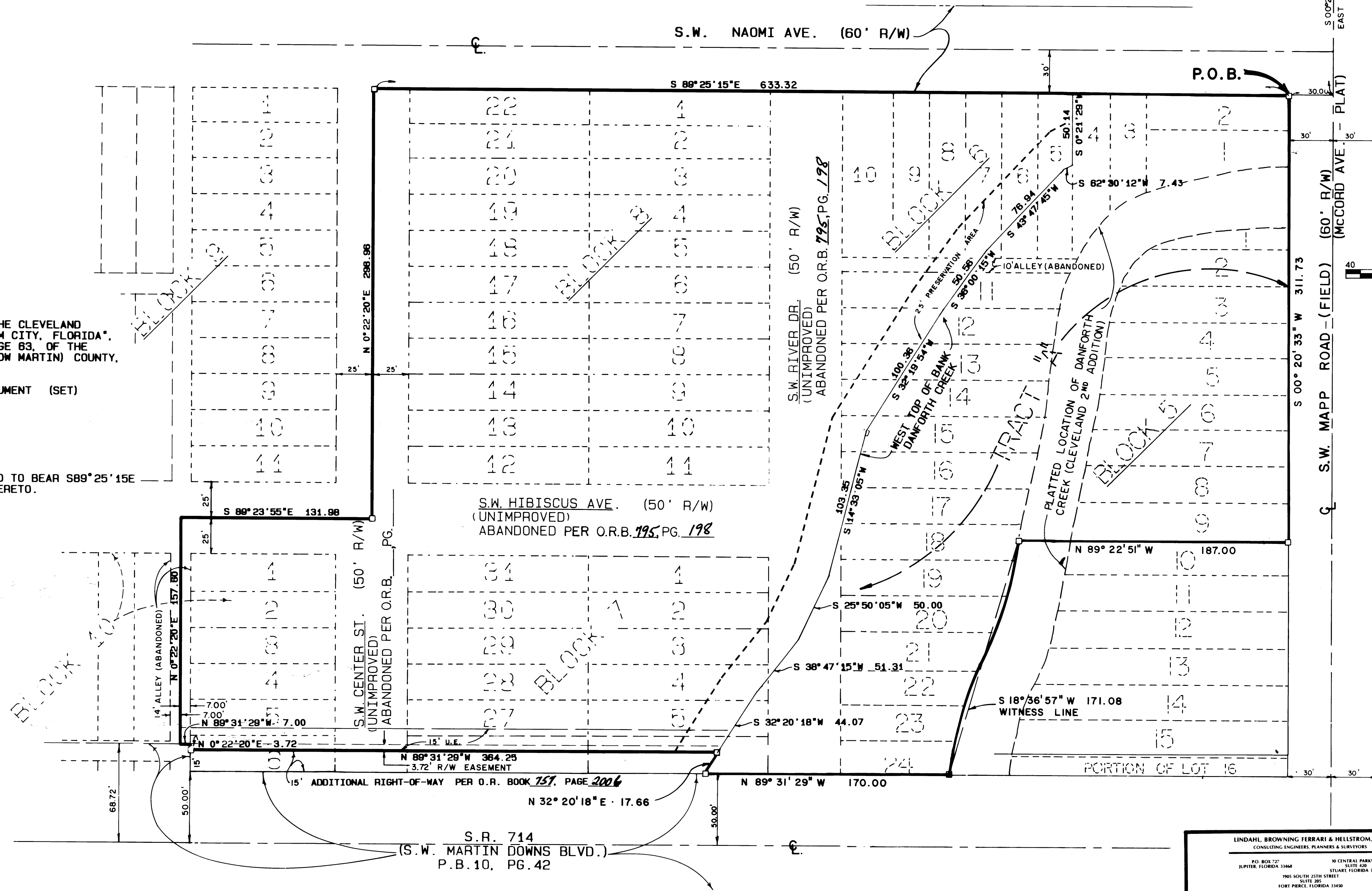
BY: _____
DEPUTY CLERK

FILE NO. _____
(CIRCUIT COURT SEAL)

SECTION 7 SECT. 8
SECTION 18 SECT. 17
TWP. 38S.
RGE. 41E.

- LEGEND**
- 10 DENOTES LOTS PER "THE PLAT OF THE CLEVELAND 2ND ADDITION TO THE TOWN OF PALM CITY, FLORIDA", AS RECORDED IN PLAT BOOK 11, PAGE 63, OF THE PUBLIC RECORDS OF PALM BEACH (NOW MARTIN) COUNTY, FLORIDA.
 - DENOTES PERMANENT REFERENCE MONUMENT (SET)
 - U.E. DENOTES UTILITY EASEMENT

BEARING BASE:
THE CENTERLINE OF NAOMI AVE. IS ASSUMED TO BEAR S89°25'15E
AND ALL OTHER BEARINGS ARE RELATIVE THERETO.



LINDAHL, BROWNING, FERRARI & HELLSTROM, INC.
CONSULTING ENGINEERS, PLANNERS & SURVEYORS
P.O. BOX 727
JUPITER, FLORIDA 33466
1905 SOUTH 212TH STREET
SUITE 200
FORT MEADE, FLORIDA 33450

2 2